



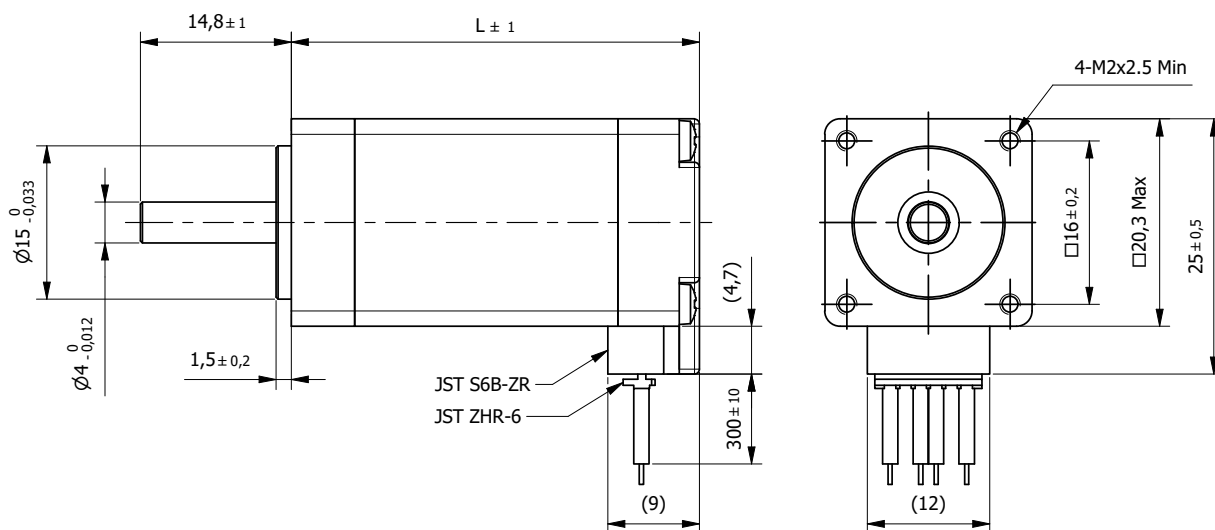
Hybrid Stepper motors  
**STC-series**

Hybrid Stepper motors - STC series Hyper Torque		
20STC33 - Hyper Torque	0,022	328
20STC40 - Hyper Torque	0,036	329
28STC32 - Hyper Torque	0,080	330
28STC40 - Hyper Torque	0,130	331
28STC51 - Hyper Torque	0,180	332
57STC41 - Hyper Torque	0,600	333
57STC56 - Hyper Torque	1,400	334
57STC76 - Hyper Torque	2,300	335

# Hybrid Stepper Motor 20STC33

## Hyper Torque

□ 20mm

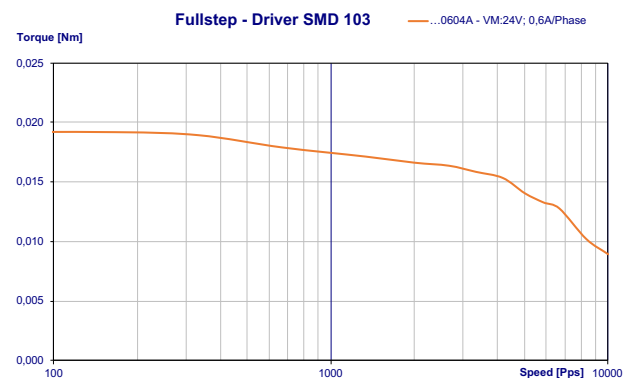


Specification			
Model	...0604A		
1	Rated Voltage	V	3,84
2	Current/Phase	A	0,6
3	Resistance/Phase	Ω	6,4
4	Inductance/Phase	mH	2,6
5	Holding Torque	Nm	0,022
6	Rotor Inertia	gcm <sup>2</sup>	2
7	Detent Torque	Nm	0,002
8	n° of Leads		4
9	Length (L)	mm	33
10	Weight	Kg	0,06

Characteristics	
Item	
Step angle	1,8°
Step angle Accuracy	±5%
Insulation Class	B
Protection Class	IP30
Ambient Temperature	-20°C to +50°C
Max. Temp. Rise (rated current, 2-phase on)	80°C
Max. Shaft Radial play (450g load)	0,02mm
Max. Shaft Axial play (450g load)	0,08mm
Max. Radial Force (20mm from front flange)	10N
Max Axial Force	4N
Dielectric Strength (for 1 min.)	500 VAC
Insulation Resistance (min. 500 VDC)	100 Mohm

Standard Combination	
Drive	
Aries	
Libra	
Orion	
Aquarius	
* other options on request	

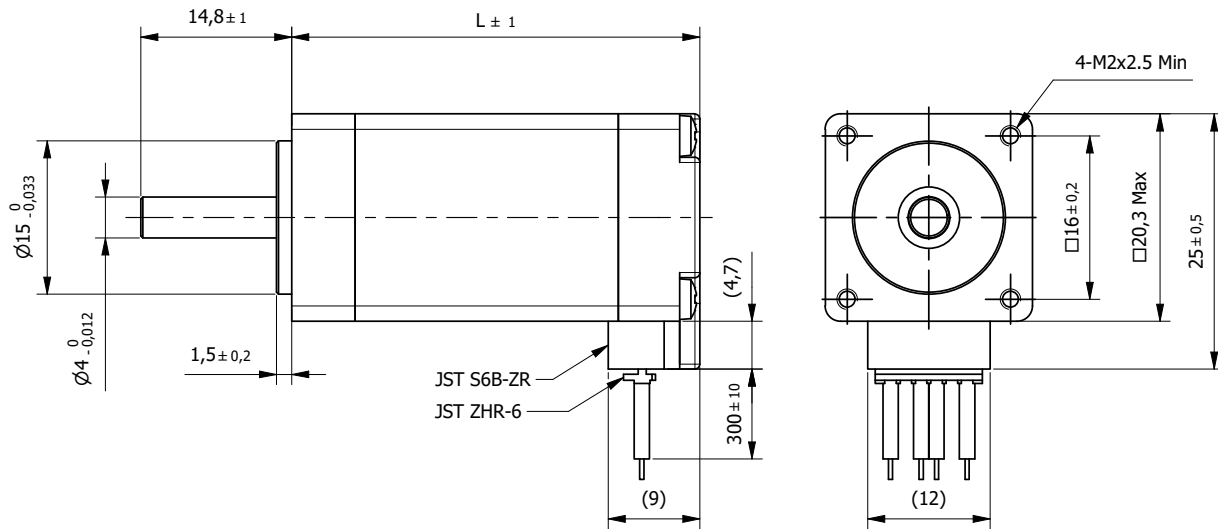
Connection			
Lead n°	Color	Gauge	Function
1	Black	UL1061 AWG26	Phase A
3	Green		Phase A-
4	Red		Phase B
6	Blue		Phase B-



# Hybrid Stepper Motor 20STC40

## Hyper Torque

□ 20mm

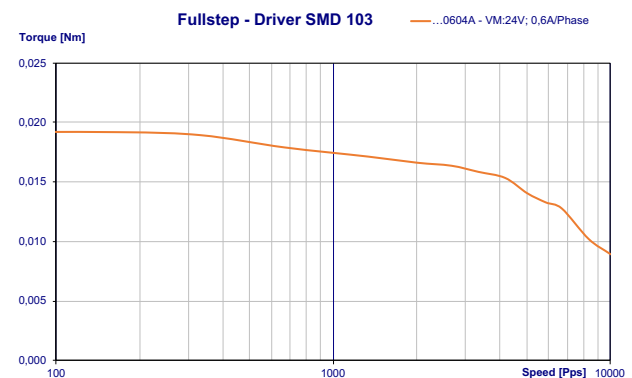


Specification			
Model	...0804A		
1	Rated Voltage	V	4,32
2	Current/Phase	A	0,8
3	Resistance/Phase	Ω	5,6
4	Inductance/Phase	mH	2,3
5	Holding Torque	Nm	0,036
6	Rotor Inertia	gcm <sup>2</sup>	3,6
7	Detent Torque	Nm	0,002
8	n° of Leads		4
9	Length (L)	mm	40
10	Weight	Kg	0,08

Characteristics	
Item	
Step angle	1,8°
Step angle Accuracy	±5%
Insulation Class	B
Protection Class	IP30
Ambient Temperature	-20°C to +50°C
Max. Temp. Rise (rated current, 2-phase on)	80°C
Max. Shaft Radial play (450g load)	0,02mm
Max. Shaft Axial play (450g load)	0,08mm
Max. Radial Force (20mm from front flange)	10N
Max Axial Force	4N
Dielectric Strength (for 1 min.)	500 VAC
Insulation Resistance (min. 500 VDC)	100 Mohm

Standard Combination	
Drive	
Aries	
Libra	
Orion	
Aquarius	
* other options on request	

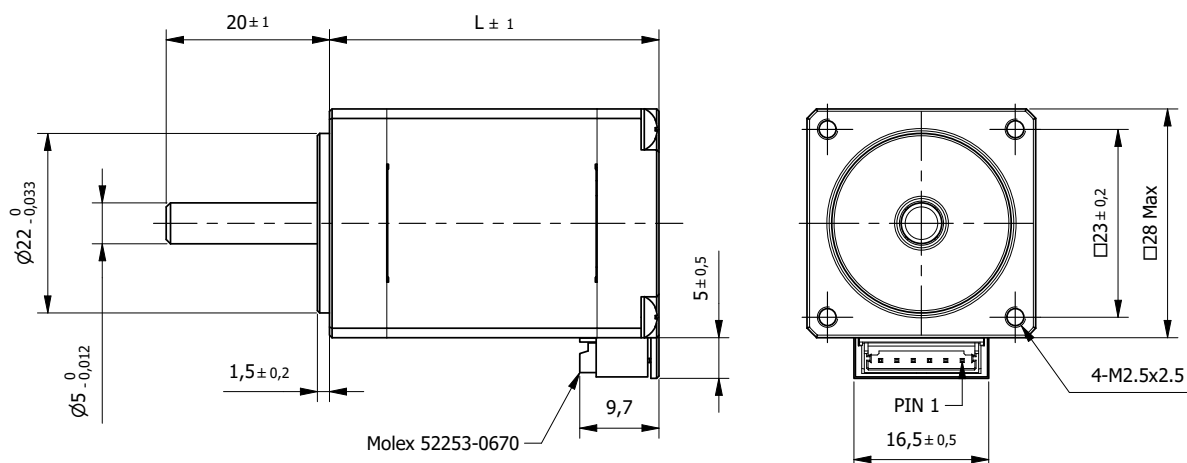
Connection			
Lead n°	Color	Gauge	Function
1	Black	UL1061 AWG26	Phase A
3	Green		Phase A-
4	Red		Phase B
6	Blue		Phase B-



# Hybrid Stepper Motor 28STC32

## Hyper Torque

□ 28mm



BE Version: Rear shaft 13mm - 2x M2.5 on diameter 19,05mm

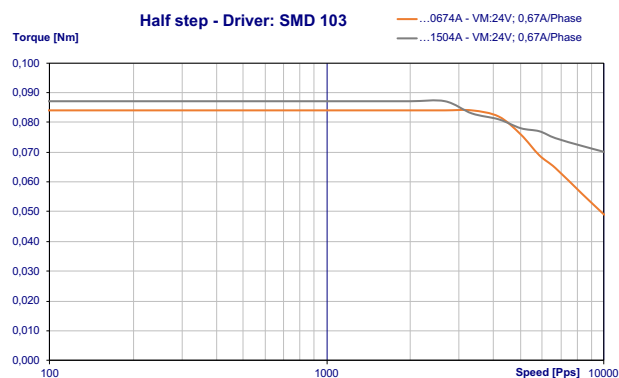
Specification				
Model		...0674A	...1504A	
1	Rated Voltage	V	4,2	1,95
2	Current/Phase	A	0,67	1,5
3	Resistance/Phase	Ω	6,2	1,3
4	Inductance/Phase	mH	5,76	1
5	Holding Torque	Nm	0,08	0,08
6	Rotor Inertia	gcm <sup>2</sup>	9	9
7	Detent Torque	Nm	0,005	0,005
8	n° of Leads		4	4
9	Length (L)	mm	32	32
10	Weight	Kg	0,11	0,11

Characteristics	
Item	
Step angle	1,8°
Step angle Accuracy	±5%
Insulation Class	B
Protection Class	IP30
Ambient Temperature	-20°C to +50°C
Max. Temp. Rise (rated current, 2-phase on)	80°C
Max. Shaft Radial play (450g load)	0,02mm
Max. Shaft Axial play (450g load)	0,08mm
Max. Radial Force (20mm from front flange)	28N
Max Axial Force	7N
Dielectric Strength (for 1 min.)	500 VAC
Insulation Resistance (min. 500 VDC)	100 Mohm

Standard Combination		
Encoder	Gearbox	Drive
E4	28JMS	Aries
E5	22JMS	Libra
		Orion
		Aquarius

\* other options on request

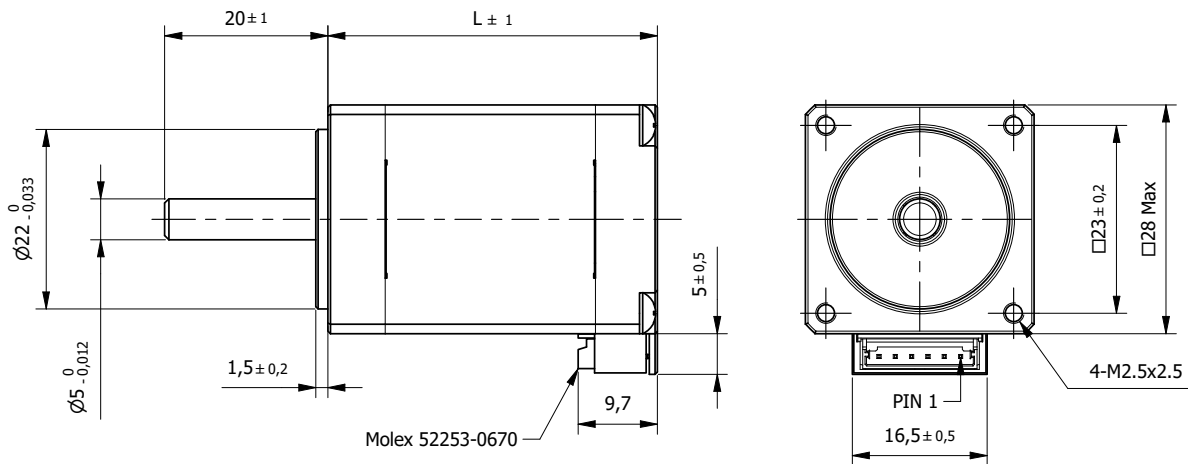
Connection				
Pin n°	Color	Gauge	Function	
1	Black	UL1061 AWG28	Phase A	
3	Green		Phase A-	
4	Red		Phase B	
6	Blue		Phase B-	



# Hybrid Stepper Motor 28STC40

## Hyper Torque

□ 28mm



BE Version: Rear shaft 13mm - 2x M2.5 on diameter 19,05mm

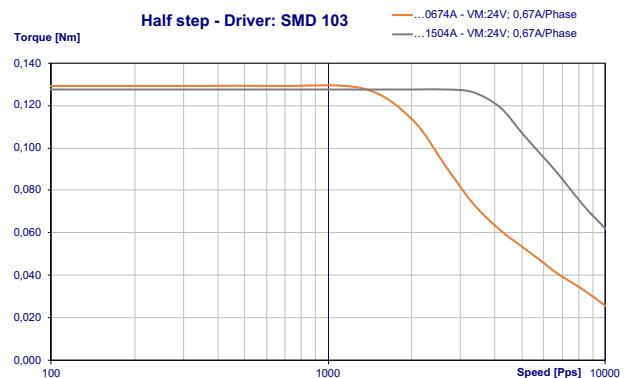
Specification			...0674A	...1504A
1	Rated Voltage	V	4,9	2,2
2	Current/Phase	A	0,67	1,5
3	Resistance/Phase	$\Omega$	7,3	1,45
4	Inductance/Phase	mH	6,52	1,25
5	Holding Torque	Nm	0,13	0,13
6	Rotor Inertia	gcm <sup>2</sup>	12	12
7	Detent Torque	Nm	0,006	0,006
8	n° of Leads		4	4
9	Length (L)	mm	40	40
10	Weight	Kg	0,14	0,14

Characteristics	
Item	
Step angle	1,8°
Step angle Accuracy	±5%
Insulation Class	B
Protection Class	IP30
Ambient Temperature	-20°C to +50°C
Max. Temp. Rise (rated current, 2-phase on)	80°C
Max. Shaft Radial play (450g load)	0,02mm
Max. Shaft Axial play (450g load)	0,08mm
Max. Radial Force (20mm from front flange)	28N
Max Axial Force	7N
Dielectric Strength (for 1 min.)	500 VAC
Insulation Resistance (min. 500 VDC)	100 Mohm

Standard Combination		
Encoder	Gearbox	Drive
E4	28JMS	Aries
E5	22JMS	Libra
		Orion
		Aquarius

\* other options on request

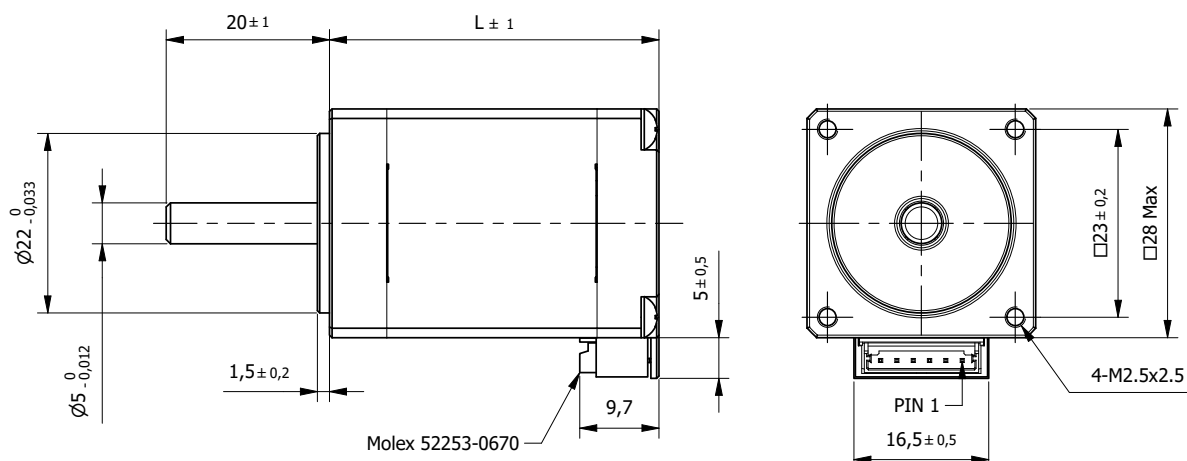
Connection			
Pin n°	Color	Gauge	Function
1	Black	UL1061 AWG28	Phase A
3	Green		Phase A-
4	Red		Phase B
6	Blue		Phase B-



# Hybrid Stepper Motor 28STC51

## Hyper Torque

□ 28mm



BE Version: Rear shaft 13mm - 2x M2.5 on diameter 19,05mm

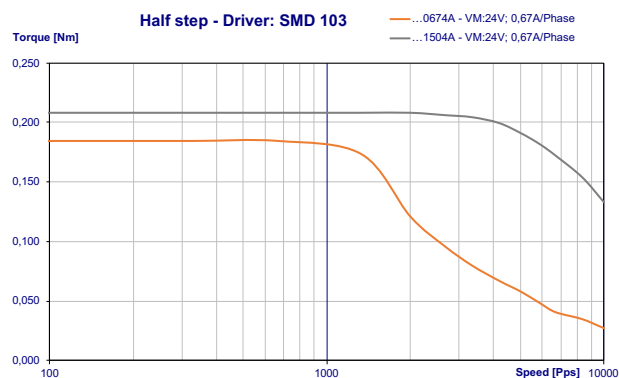
Specification				
Model		...0674A	...1504A	
1	Rated Voltage	V	6,2	2,7
2	Current/Phase	A	0,67	1,5
3	Resistance/Phase	Ω	9,2	1,9
4	Inductance/Phase	mH	8,4	1,9
5	Holding Torque	Nm	0,18	0,18
6	Rotor Inertia	gcm <sup>2</sup>	18	18
7	Detent Torque	Nm	0,008	0,008
8	n° of Leads		4	4
9	Length (L)	mm	51,5	51,5
10	Weight	Kg	0,2	0,2

Characteristics	
Item	
Step angle	1,8°
Step angle Accuracy	±5%
Insulation Class	B
Protection Class	IP30
Ambient Temperature	-20°C to +50°C
Max. Temp. Rise (rated current, 2-phase on)	80°C
Max. Shaft Radial play (450g load)	0,02mm
Max. Shaft Axial play (450g load)	0,08mm
Max. Radial Force (20mm from front flange)	28N
Max Axial Force	7N
Dielectric Strength (for 1 min.)	500 VAC
Insulation Resistance (min. 500 VDC)	100 Mohm

Standard Combination		
Encoder	Gearbox	Drive
E4	28JMS	Aries
E5	22JMS	Libra
		Orion
		Aquarius

\* other options on request

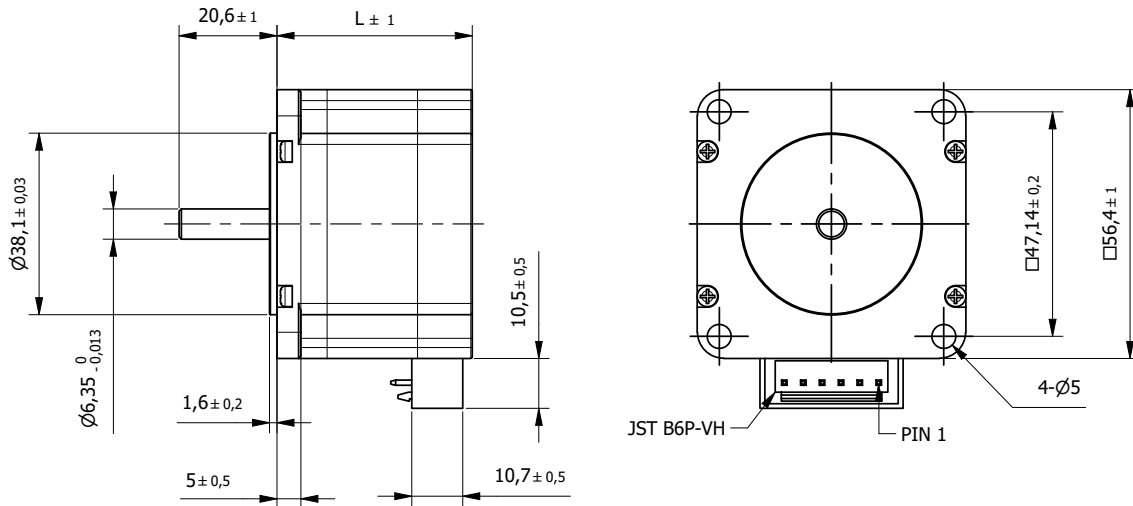
Connection				
Pin n°	Color	Gauge	Function	
1	Black	UL1061 AWG28	Phase A	
3	Green		Phase A-	
4	Red		Phase B	
6	Blue		Phase B-	



# Hybrid Stepper Motor 57STC41

## Hyper Torque

□ 57mm



BE Version: Rear shaft 13mm - 2x M2.5 on diameter 46mm

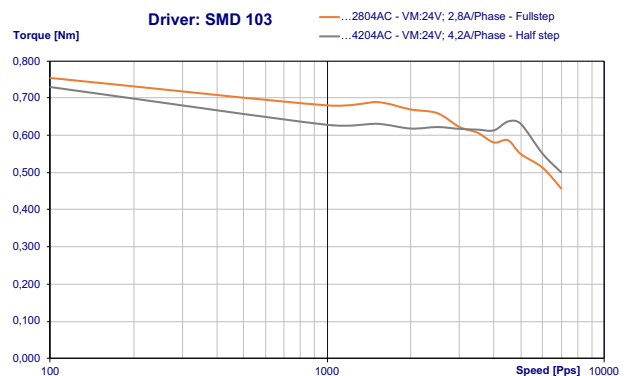
Specification				
Model		...2804AC	...4204AC	
1	Rated Voltage	V	2,1	1,5
2	Current/Phase	A	2,8	4,2
3	Resistance/Phase	Ω	0,78	0,35
4	Inductance/Phase	mH	1,8	0,8
5	Holding Torque	Nm	0,6	0,6
6	Rotor Inertia	gcm <sup>2</sup>	120	120
7	Detent Torque	Nm	0,021	0,021
8	n° of Leads		4	4
9	Length (L)	mm	41	41
10	Weight	Kg	0,45	0,45

Characteristics	
Item	
Step angle	1,8°
Step angle Accuracy	±5%
Insulation Class	B
Protection Class	IP30
Ambient Temperature	-20°C to +50°C
Max. Temp. Rise (rated current, 2-phase on)	80°C
Max. Shaft Radial play (450g load)	0,02mm
Max. Shaft Axial play (450g load)	0,08mm
Max. Radial Force (20mm from front flange)	20N
Max Axial Force	15N
Dielectric Strength (for 1 min.)	500 VAC
Insulation Resistance (min. 500 VDC)	100 Mohm

Connection			
Pin n°	Color	Gauge	Function
1	Black	UL1430 AWG22	Phase A
2	Green		Phase A-
3	Red		Phase B
4	Blue		Phase B-

Standard Combination		
Encoder	Gearbox	Drive
E3	GYP56	Aries
E4	56JMS	Libra
E5		Sagittarius
		Aquarius

\* other options on request

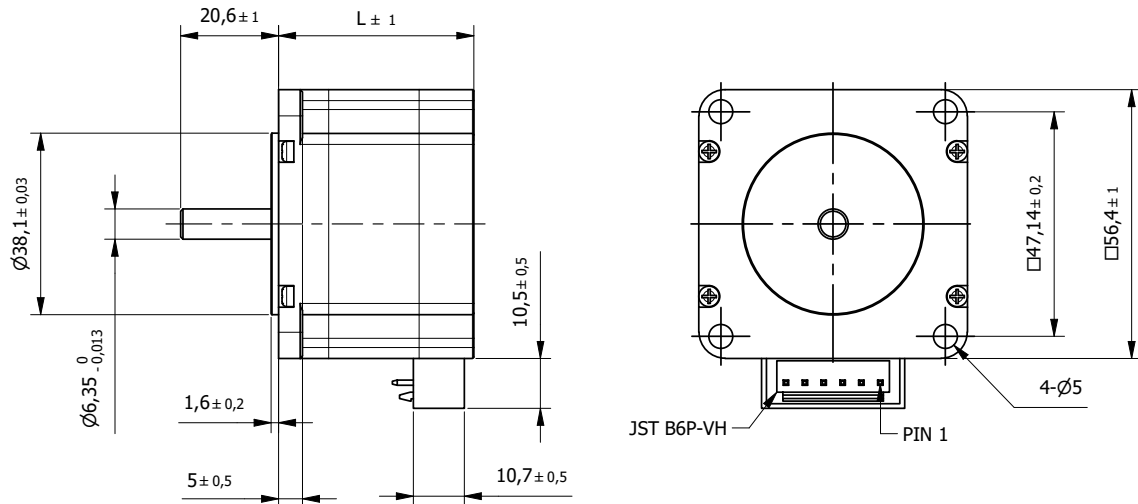




# Hybrid Stepper Motor 57STC56

## Hyper Torque

□ 57mm



BE Version: Rear shaft 13mm - 2x M2.5 on diameter 46mm

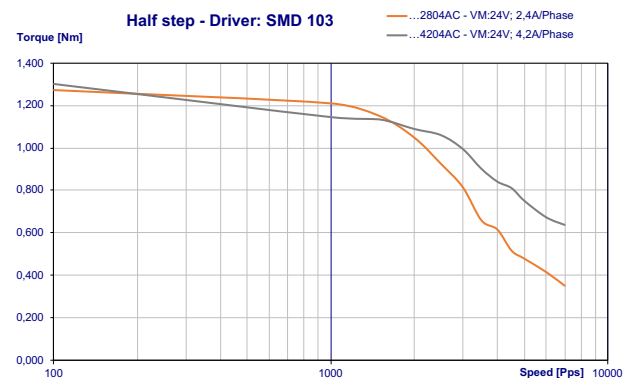
Specification			...2804AC	...4204AC
1	Rated Voltage	V	2,8	2,1
2	Current/Phase	A	2,8	4,2
3	Resistance/Phase	Ω	1	0,5
4	Inductance/Phase	mH	3,2	1,6
5	Holding Torque	Nm	1,4	1,4
6	Rotor Inertia	gcm <sup>2</sup>	300	300
7	Detent Torque	Nm	0,04	0,04
8	n° of Leads		4	4
9	Length (L)	mm	56	56
10	Weight	Kg	0,7	0,7

Characteristics	
Item	
Step angle	1,8°
Step angle Accuracy	±5%
Insulation Class	B
Protection Class	IP30
Ambient Temperature	-20°C to +50°C
Max. Temp. Rise (rated current, 2-phase on)	80°C
Max. Shaft Radial play (450g load)	0,02mm
Max. Shaft Axial play (450g load)	0,08mm
Max. Radial Force (20mm from front flange)	20N
Max Axial Force	15N
Dielectric Strength (for 1 min.)	500 VAC
Insulation Resistance (min. 500 VDC)	100 Mohm

Standard Combination		
Encoder	Gearbox	Drive
E3	GYP56	Aries
E4	56JMS	Libra
E5		Sagittarius
		Aquarius

\* other options on request

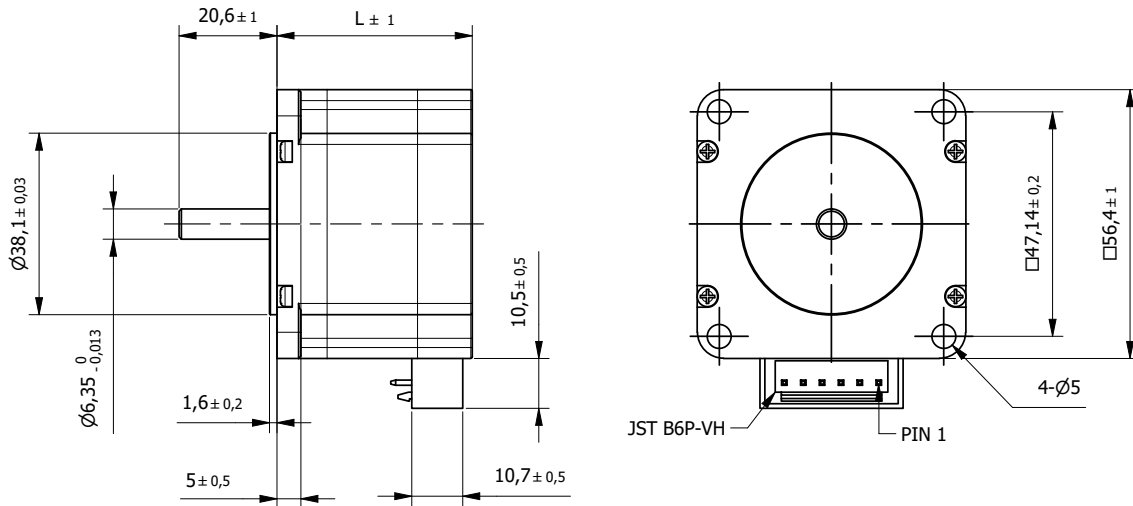
Connection			
Pin n°	Color	Gauge	Function
1	Black	UL1430 AWG22	Phase A
2	Green		Phase A-
3	Red		Phase B
4	Blue		Phase B-



# Hybrid Stepper Motor 57STC76

## Hyper Torque

□ 57mm



BE Version: Rear shaft 13mm - 2x M2.5 on diameter 46mm

Specification				
Model		...2804AC	...4204AC	
1	Rated Voltage	V	3,6	2,3
2	Current/Phase	A	2,8	4,2
3	Resistance/Phase	Ω	1,3	0,55
4	Inductance/Phase	mH	5,3	2,1
5	Holding Torque	Nm	2,3	2,3
6	Rotor Inertia	gcm <sup>2</sup>	480	480
7	Detent Torque	Nm	0,068	0,068
8	n° of Leads		4	4
9	Length (L)	mm	76	76
10	Weight	Kg	1,2	1,2

Characteristics	
Item	
Step angle	1,8°
Step angle Accuracy	±5%
Insulation Class	B
Protection Class	IP30
Ambient Temperature	-20°C to +50°C
Max. Temp. Rise (rated current, 2-phase on)	80°C
Max. Shaft Radial play (450g load)	0,02mm
Max. Shaft Axial play (450g load)	0,08mm
Max. Radial Force (20mm from front flange)	20N
Max Axial Force	15N
Dielectric Strength (for 1 min.)	500 VAC
Insulation Resistance (min. 500 VDC)	100 Mohm

Connection			
Pin n°	Color	Gauge	Function
1	Black	UL1430 AWG22	Phase A
2	Green		Phase A-
3	Red		Phase B
4	Blue		Phase B-

Standard Combination		
Encoder	Gearbox	Drive
E3	GYP56	Aries
E4	56JMS	Libra
E5		Sagittarius
		Aquarius

\* other options on request

