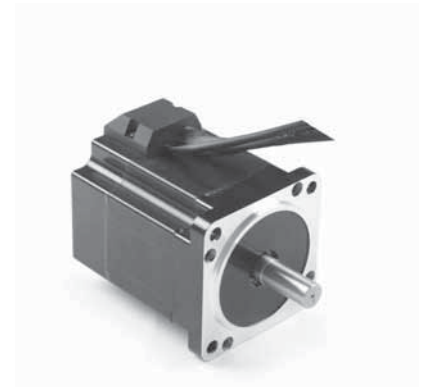


## SPECIFICATION

Model		70BLS86	70BLS116	70BLS136
1	N° OF POLE	8	8	8
2	N° OF PHASE	3	3	3
3	RATED VOLTAGE	V	48	48
4	RATED SPEED	rpm	3000	3000
5	RATED TORQUE	Nm	0,5	1,5
6	MAX PEAK TORQUE	Nm	1,5	3
7	TORQUE CONSTANT	Nm/A	0,12	0,12
8	LINE TO LINE RESISTANCE	Ω	0,60	0,30
9	LINE TO LINE INDUCTANCE	mH	1,40	0,70
10	MAX PEAK CURRENT	A	13	26
11	RATED CURRENT	A	4,17	8,33
12	NO-LOAD CURRENT	mA	600	600
13	LENGTH	mm	86	116
14	ROTOR INERTIA	g-cm <sup>2</sup>	200	400
15	WEIGHT	Kg	1,3	2,1



## CONNECTION

Lead N°	Color	Gauge	Function
1	RED	UL2464 AWG26	VCC HALL SENSOR +5 TO +24VDC
2	BLUE	UL2464 AWG26	HALL A
3	GREEN	UL2464 AWG26	HALL B
4	WHITE	UL2464 AWG26	HALL C
5	BLACK	UL2464 AWG26	HALL SENSOR GROUND
6	YELLOW	UL2464 AWG16	PHASE U
7	RED	UL2464 AWG16	PHASE V
8	BLACK	UL2464 AWG16	PHASE W

## CHARACTERISTICS

Item	
HALL EFFECT ANGLE	120°
SHAFT RUN OUT	0,05 mm
INSULATION CLASS	B
RADIAL PLAY (450 g load)	0,02 mm
AXIAL PLAY (450 g load)	0,08 mm
MAX RADIAL FORCE (20 mm FROM FRONT FLANGE)	115N
MAX AXIAL FORCE	45N
DIELECTRIC STRENGTH	600 VAC FOR ONE SECOND
INSULATION RESISTANCE	100 Mohm min. 500 VDC