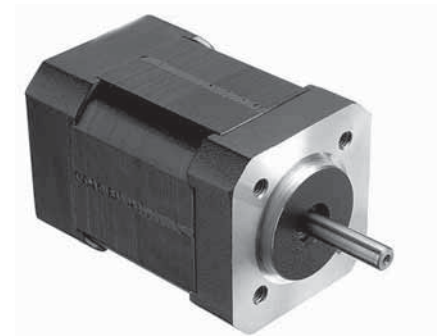


## SPECIFICATION

Model		42BL41	42BL61	
1	N° OF POLE	8	8	
2	N° OF PHASE	3	3	
3	RATED VOLTAGE	V	24	24
4	RATED SPEED	rpm	4000	4000
5	RATED TORQUE	Nm	0,0625	0,125
6	MAX PEAK TORQUE	Nm	0,19	0,38
7	TORQUE CONSTANT	Nm/A	0,035	0,036
8	LINE TO LINE RESISTANCE	$\Omega$	1,5	0,8
9	LINE TO LINE INDUCTANCE	mH	2,1	1,2
10	MAX PEAK CURRENT	A	6	10,8
11	RATED CURRENT	A	1,79	3,47
12	NO-LOAD CURRENT	mA	200	240
13	LENGTH	mm	41	61
14	ROTOR INERTIA	g-cm <sup>2</sup>	24	48
15	WEIGHT	Kg	0,3	0,45

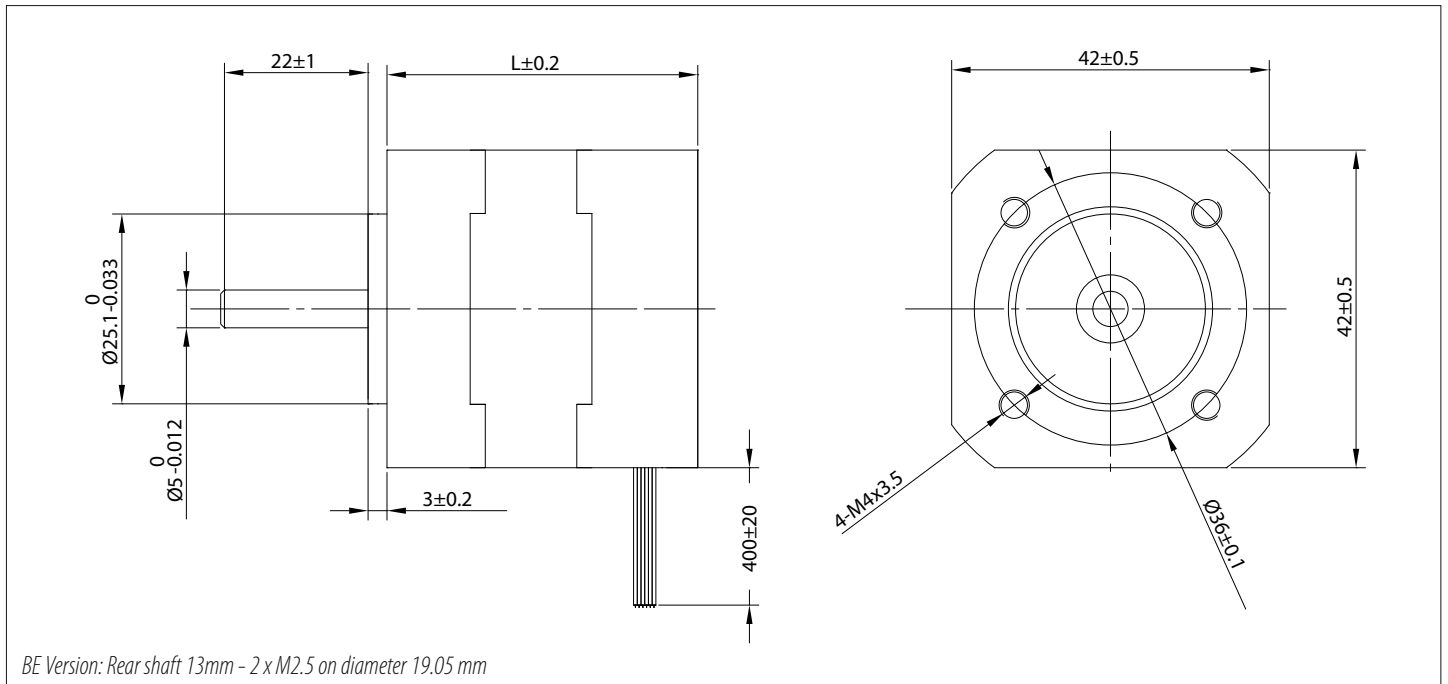


## CONNECTION

Lead N°	Color	Gauge	Function
1	RED	UL1430 AWG26	VCC HALL SENSOR +5 TO +24 VDC
2	BLUE	UL1430 AWG26	HALL A
3	GREEN	UL1430 AWG26	HALL B
4	WHITE	UL1430 AWG26	HALL C
5	BLACK	UL1430 AWG26	HALL SENSOR GROUND
6	YELLOW	UL1430 AWG20	PHASE U
7	RED	UL1430 AWG20	PHASE V
8	BLACK	UL1430 AWG20	PHASE W

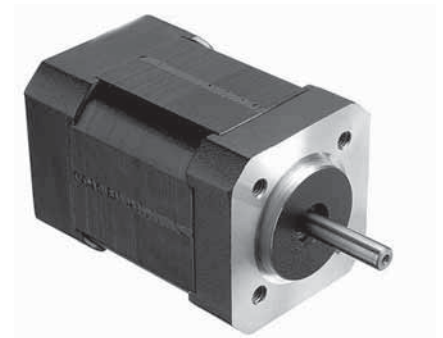
## CHARACTERISTICS

Item	
HALL EFFECT ANGLE	120°
SHAFT RUN OUT	0,025 mm
INSULATION CLASS	B
RADIAL PLAY (450 g LOAD)	0,02 mm
AXIAL PLAY (450 g LOAD)	0,08 mm
MAX RADIAL FORCE (10 mm FROM FRONT FLANGE)	28N
MAX AXIAL FORCE	10N
DIELECTRIC STRENGTH	500 VDC FOR ONE MINUTE
INSULATION RESISTANCE	100 Mohm min. 500 VDC



## SPECIFICATION

Model		42BL81	42BL100
1	N° OF POLE	8	8
2	N° OF PHASE	3	3
3	RATED VOLTAGE	V	24
4	RATED SPEED	rpm	4000
5	RATED TORQUE	Nm	0,185
6	MAX PEAK TORQUE	Nm	0,75
7	TORQUE CONSTANT	Nm/A	0,036
8	LINE TO LINE RESISTANCE	$\Omega$	0,43
9	LINE TO LINE INDUCTANCE	mH	0,71
10	MAX PEAK CURRENT	A	15,5
11	RATED CURRENT	A	5,14
12	NO-LOAD CURRENT	mA	400
13	LENGTH	mm	81
14	ROTOR INERTIA	g-cm <sup>2</sup>	72
15	WEIGHT	Kg	0,65



## CONNECTION

Lead N°	Color	Gauge	Function
1	RED	UL1430 AWG26	VCC HALL SENSOR +5 TO +24 VDC
2	BLUE	UL1430 AWG26	HALL A
3	GREEN	UL1430 AWG26	HALL B
4	WHITE	UL1430 AWG26	HALL C
5	BLACK	UL1430 AWG26	HALL SENSOR GROUND
6	YELLOW	UL1430 AWG20	PHASE U
7	RED	UL1430 AWG20	PHASE V
8	BLACK	UL1430 AWG20	PHASE W

## CHARACTERISTICS

Item	
HALL EFFECT ANGLE	120°
SHAFT RUN OUT	0,025 mm
INSULATION CLASS	B
RADIAL PLAY (450 g LOAD)	0,02 mm
AXIAL PLAY (450 g LOAD)	0,08 mm
MAX RADIAL FORCE (10 mm FROM FRONT FLANGE)	28N
MAX AXIAL FORCE	10N
Dielectric Strength	500 VDC FOR ONE MINUTE
INSULATION RESISTANCE	100 Mohm min. 500 VDC